

Protection in wet, dry or damp locations: **LED Power Supply Cans**

*Models available for use with
One or Two Power Supplies*



LED POWER SUPPLY CANS

Convenient Knockouts

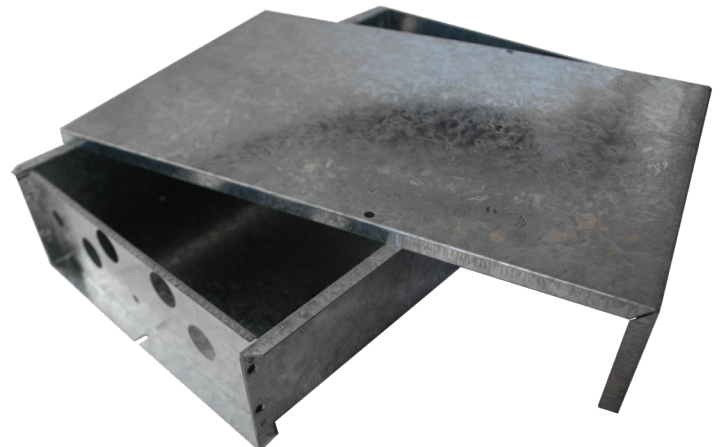
Rigid Construction

Listed for wet, dry and damp locations

Rigid G90 Galvanized Steel Construction

Meets UL requirements without being
elevated above mounting surface

Quality hardware- easy to use



For more information, contact your France distributor or email us at sales@sfeg.com

FRANCE

LIGHTING SOLUTIONS

800.793.4793

www.sfeg.com

2268 Fairview Blvd, Fairview, TN 37062

LED Power Supply Cans Specifications



Convenient 1/2 inch Conduit Knock-outs

Primary and secondary grounding capability without drilling or punching. Prepunched on double can. Knock-outs for toggle switch provided.

Rigid G90 Galvanized Steel Construction

.029 inches thick

Quality hardware- easy to use.

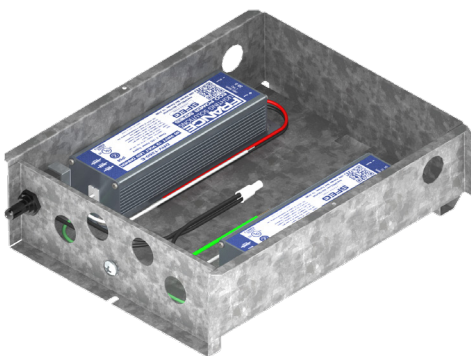
Maximum water resistance

Listed for wet, dry or dry locations. No extra rain shields required. Required drain holes are included.

Meets UL requirements without being elevated above mounting surface.

UL879 listed. Certified by cULus Standard. Certified by Underwriter's Laboratories to Canadian standard.

Product	Model Number	Length	Width	Height	Weight	Packaging
LED Power Supply Can	TC15TOW-LED	14.9"	5.3"	3.2"	2.6 pounds	12 per box
Double LED Power Supply Can	TC14HVW-LED	14.5"	9.5"	3.25"	4 pounds	12 per box



Check out our LED Fast-Pak Kits

UL Listed, pre-wired and pre-assembled sign installation kits:

One compact IP68 60W LED Power Supply

EPS-1260-FP-1

One premium IP68 60W LED Power Supply

MMPS-1260-FP-1

or Two premium IP68 60W LED Power Supply

MMPS-1260-FP-2

For more information, contact your France distributor or email us at sales@sfeg.com

800.793.4793

www.sfeg.com

2268 Fairview Blvd, Fairview, TN 37062