

Tips for LED Power Supply Installation and Troubleshooting



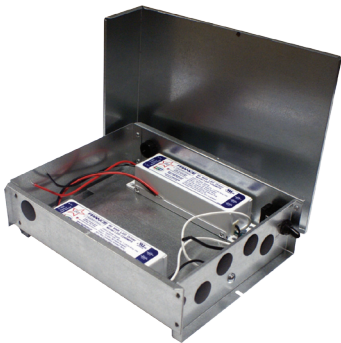
Avoiding Problems

- If using an enclosure box with louvers, place the box so the louvers are horizontal to prevent water from entering and to ensure proper air circulation.
- Make sure the primary wiring is routed to avoid compromising the spacing requirements.
- Do not leave the cover off of the LED power supply box after installation.

Tips for Installation

- All wiring must be rated at 105°C or greater.
- Do not leave any knockout holes open. If a knockout is removed and not used, place a cap intended for that purpose in the unused holes.
- Do not attempt to mount an additional power supply in a single box—overheating the power supplies will result. A recommended option is to use two power supplies that are paired together in a box with approved current specifications. France has developed the double Fast-Pak and double Mini Fast-Pak for these types of situations.

See more installation instructions and diagrams online.



Preferred LED Wiring Series/Parallel vs. Series

- Connecting a single long string of LED modules to the power supply ("series wiring"), can lead to under powering of the LED's farthest from the power supply.
- To prevent this, consider wiring LED modules in "series/parallel". That is, connect the same total number of modules, but in several shorter strings, each connected directly to the power.
- For example, in one extreme case, a string of 120 one-watt models drew only 58 watts from the power supply.
- France power supplies exert 100% voltage—20% higher than the industry standard of 80%.



Read more tips and view detailed installation diagrams on our website
www.franceformer.com